

# United States Coast Guard Band

## Co-Principal Oboe

Preliminary Audition: Application Materials Due: September 1, 2025

Live Audition: Invitation only: October 14, 2025

### Application Instructions

- Email the following to [CGBauditions@gmail.com](mailto:CGBauditions@gmail.com) by **September 1**.
  1. **One-Page Resume**
  2. Submit a single, downloadable **Audio Recording**. Excerpts may be recorded separately and combined into a single file in the order listed.
- Recordings should not be edited other than to trim excessive silence (optional).
- To preserve anonymity, please do not talk or make any extraneous noise during your recording.
- Include your last name in the audio file name.
- You will receive a confirmation email when your application materials are received.
- Recordings will be played anonymously for a listening committee on September 5.
- Candidates with successful recordings will be invited to a live audition on **October 14**.

### Audio Recording Repertoire

1. A two-to-five-minute musical example or excerpt of your choosing that showcases the uniqueness and depth of your playing abilities.
2. **Mozart**, Concerto in C Major Mvt. 1, exposition
3. **Brahms**, Violin Concerto 2nd Mvt., m. 3 through 32
4. **Grainger**, Lincolnshire Posy Mvt. 3 “Rufford Park Poachers”, m. 86 through end  
Mvt. 4 “The Brisk Young Sailor”, 25 through 33
5. **Ravel**, Le Tombeau de Couperin I. Prelude, beginning through #2
6. **Rossini**, La Scala di Seta opening solo to #3

# United States Coast Guard Band

## Co-Principal OBOE

Live Audition for Invited Candidates: October 14, 2025

Leamy Concert Hall

U.S. Coast Guard Academy

New London, CT 06320

### Live Audition Repertoire

#### Solo:

<b>Mozart</b>	Concerto in C Major	Mvt. 1, exposition
---------------	---------------------	--------------------

#### First Oboe Excerpts:

<b>Arnold</b>	Four Scottish Dances	Mvt. 2, pickup to A to 8 after A, pickup to D to 8 after D Mvt. 3, pickup to E to 1 after H
<b>Beethoven</b>	Symphony No. 3	Mvt 2. m.8 - Reh 56
<b>Brahms</b>	Violin Concerto	Mvt. 2 m.3-32
<b>Day</b>	Concerto for Wind Ensemble	II. Riff, m.171-185 III. Vibe, m.313-331 V. Jam, m.484-493
<b>Grainger</b>	Lincolnshire Posy	Mvt. 3 "Rufford Park Poachers", m.86 through end Mvt. 4 "The Brisk Young Sailor, m.25-33
<b>Hindemith</b>	Symphony in B-Flat	Mvt. 1, m.28-36, m.51-55, m. 157-168 Mvt. 2, m.95-105 Mvt. 3, m.66-77 m.278-295
<b>Maslanka</b>	Traveler	Mvt. 2 m.32-100
<b>Mendelssohn</b>	Symphony No. 3	
<b>Ravel</b>	Le Tombeau de Couperin	I. Prelude, beginning to [2] <i>with repeat</i> , [8] – [9] III. Menuet, beginning to Reh. 4 <i>with repeats</i> beginning to Reh. 3
<b>Rossini</b>	La Scala di Seta Overture	Serenata, [8] – [10] Gavotta and Variation 1A
<b>Stravinsky</b>	Suite de Pulcinella	

#### Second Oboe Excerpt:

<b>Gould</b>	American Salute	pickup to m.54-63
--------------	-----------------	-------------------

#### Section Playing:

<b>Beethoven</b>	Variations on <i>La ci darem la mano</i>	Variation VI (oboe 1) Variation VIII & Coda (oboe 2)
<b>Day</b>	Concerto for Wind Ensemble	
<b>Mozart</b>	Serenade #12 K.388	IV Soul, 409-421 (oboe 1) Menuetto and Trio (oboe 1 and 2)

# Konzert C-Dur für Oboe und Orchester

Oboe Solo

KV 314

W.A. Mozart

Allegro aperto

31 *tr*

37

40

43

46 *tr* 2 *tr*

51 *tr*

56 *tr* *tr*

60

64

67

70

73 *tr* *tr* *tr* *tr* *fp*

78 *fp*

82 *fp*

85

88 *fp* *fp*

93

96 *tr* 8 *tr* *tr*

110 *tr*

114

117

119



# FOUR SCOTTISH DANCES

## II

*Vivace*

5 (2 players)

*ff* *f* 1° (A)

(B)

(D)

*f* *p* *sol*

## III

*p* 7 1° solo *mp*

(E)

*mp* (F) 7 1° solo *poco* *mf*

(G) *mp* *espr. rit.* *a tempo* (H) 7

*mf* *mp* *p*

# Beethoven 3<sup>rd</sup> Sym

## MARCIA FUNEBRE

Adagio assai (♩=80)

**6** Viol. I

Adagio assai (♩=80)

6 Viol. I

14 *cresc. decresc. p* **A** 17 Viol. I *f p sf p cresc. f*

41 *p sf p* **B** 2 Ob. II *sf p cresc.*

54 *f p p* 3 *f sf p* 3

Maggiore

69 *p cresc. ff sf sf sf* **C**

# Brahms, Violin Concerto

## Oboe I

## Adagio

## Tutti

Hr.

(Solo)

*p. dolce*

Ob.II

*P*

*dim.*

*p*

## Solo

14

Solo-Viol.

Adagio

Fag. Tutti Hr. (Solo)

*p dolce*

Ob. II *p*

*dim.*

*p*

*mf* *p*

Solo 11 Solo-Viol.

II. Riff

$\text{♩} = 152$

165

168

173

178

183

184

*mf* *mf* *fz* *fz* *ff* *mp* *mf*

### III. Vibe

(for Dad)

Rubato (slowly)

**296** ♩ = 90

The musical score for 'The Rose Tree' is written for a single melodic line in treble clef. The key signature has three flats (B-flat, E-flat, A-flat), and the time signature is 4/4. The melody consists of several measures, including a 6-measure rest, a 4-measure rest, and a triplet of eighth notes marked with a forte (*mf*) dynamic and an accent (>). The piece concludes with a final double bar line.

305

303

2 7

*ff*

315

Example 10-15

320

318

320

3

2

2 + 3

327

**331**  $2 + 3$

V. Jam

$\text{♩} = 160$

15

471

*mf*

478

4

6

484

*mf*

488

*mf*

3

2

**Solo**

*pp* *mp* *p*

*f* *p* *p*

*Slow* *off* *long*

95

3

3

*ppp*

SBS-250

4. "THE BRISK YOUNG SAILOR"  
(who returned to wed his True Love)

*Sprightly*

8 9

*mp*

17 25

7

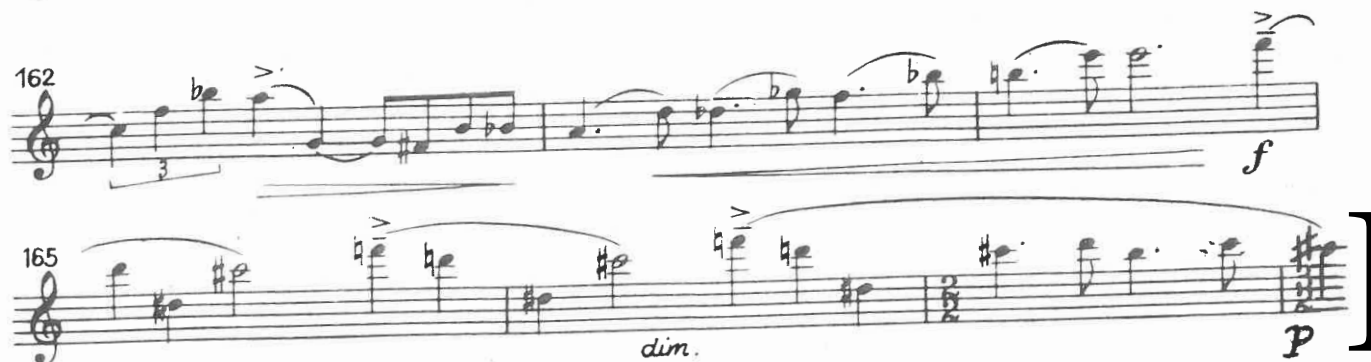
*Solo*

*mf (detached)*

# HINDEMITH SYMPHONY IN B FLAT, MVT 1

2

Oboe 1st





# HINDEMITH SYMPHONY IN B FLAT, MVT 2

95 *mf*

97

101 (J) *mf* T. Bone

105

# HINDEMITH SYMPHONY IN B FLAT, MVT 3

64 Clar. Eb (E) scherzando *p*

69

73

77 (F) espressivo *mf* Fl 1st, 2nd

Oboe 1,2

# Traveler

David Maslanka

278 *hold back... in tempo* **280**  
1. solo *pp* *mp* *p*

287 **290**

293 *hold , back...* *in tempo* **300** *slowing.*  
4 2 2

# Mendelssohn — Symphony No. 3

## OBOE I

Vivace non troppo.

1 20 Clar. *mf* **A**

34 *cresc.* *f*

44 *f* *cresc.* *ff*

57 *f*

66 **B** 15 *pp* *f* *p* **C** *f*

89 *p* *pp*

95 *pp* 11

Maurice Ravel  
Le Tombeau de Couperin

HAUTBOIS et COR ANGLAIS

I. Prélude

(★) Vif. ♩ = 92

HAUTBOIS  
COR ANGLAIS  
(2<sup>d</sup> Hautbois)

pp

1

COR A. pp

mp

p

2

3

7

mp

HAUTB.

mf

f

ff



V. S.

(★) Les petites notes, dans toute cette Suite, doivent être attaquées sur le temps.

# HAUTBOIS

**4**

*p*

**1<sup>a</sup>**

**2<sup>a</sup>**

*f*

**5**

*p*

**SOLO**

*pp*

**6**

**4**

**7**

**2**

Trp.

*p*

**COR A. SOLO**

*mf*

*f*

**8**

*f*

**4**

*pp*

Prenez le 2<sup>d</sup> HAUTB.

**9**

**4**

Prenez le COR A.

## HAUTBOIS

## III. Menuet

Allegro moderato. ♩ = 120

SOLO

HAUTBOIS

COR ANGLAIS

*pp*

1

2

*mp*

3

4

*p*

SOLO

1<sup>a</sup>

2<sup>a</sup>

4

8

5

6

vous

HAUTB.

8

2

*mf*

# G. Rossini: Overture "La Scala di Seta"

Andantino  $\text{♩} = 69$

Solo

*p dolce*

Musical score for the Andantino section of the Overture "La Scala di Seta" by G. Rossini. The tempo is Andantino, with a quarter note equal to 69 beats per minute. The music is in treble clef, 2/4 time, and begins with a "Solo" marking and a *p dolce* dynamic. The score consists of four staves. The first staff contains a melodic line with various ornaments and a bass line with triplets. The second staff continues the melodic line with a triplet in the bass. The third staff features a triplet in the bass and a first ending bracket labeled "1". The fourth staff concludes the section with a first ending bracket labeled "1".

Allegro  $\text{♩} = 132$

2

*segue stacc.*

*p*

*pp*

Musical score for the Allegro section of the Overture "La Scala di Seta" by G. Rossini. The tempo is Allegro, with a quarter note equal to 132 beats per minute. The music is in treble clef, 2/4 time, and begins with a "2" marking and a *p* dynamic, followed by a *pp* dynamic. The score consists of three staves. The first staff contains a fast, rhythmic melody with many slurs and accents. The second staff continues the melody with a triplet in the bass. The third staff features a triplet in the bass and a third ending bracket labeled "3".

# PULCINELLA SUITE

(Revised 1949 Version)

## 6. Gavotta

**73** Allegro moderato,  $\text{♩} = 50 - 56$

Musical score for Gavotta, measures 73-76. The key signature is one sharp (F#) and the time signature is 3/4. Measure 73 starts with a treble clef and a key signature of one sharp. The melody is written on a single staff. Measure 74 includes a triplet of eighth notes marked 'Solo' and a trill marked 'tr'. Measure 75 is marked 'dolce'. Measure 76 ends with a double bar line and a repeat sign, with a '4' above the staff indicating a measure rest.

### Variazione 1a

**77** Allegretto,  $\text{♩} = 100$

Musical score for Variazione 1a, measures 77-80. The key signature is one sharp (F#) and the time signature is 4/4. Measure 77 starts with a treble clef and a key signature of one sharp. The melody is written on a single staff. Measure 78 includes a trill marked 'tr'. Measure 79 includes a trill marked 'tr'. Measure 80 includes a trill marked 'tr'. The score ends with a double bar line and a repeat sign, with a '4' above the staff indicating a measure rest.

attacca



# PULCINELLA SUITE

(Revised 1949 Version)

## 2. Serenata

**8** **Larghetto**,  $J. = 54 - 56$

*Solo*

**9**

**10**

Allegro 140 bpm

American Salute

Gould

**54**

53 *pp* 55 *sim.*

56 57 58 59 60 61 62 63

Beethoven *Variations on La ci darem la mano* Oboe 1

**Var. VI.**

5

musical score for Oboe 1, Variation VI, measures 159-164. The score is written in treble clef, key of B-flat major (two flats), and 2/4 time. The first staff (measures 159-160) begins with a rest, followed by a half note G4, a quarter note A4, and a half note B4. The second staff (measures 161-162) continues with a half note C5, a quarter note D5, and a half note E5. The third staff (measures 163-164) features a half note F5, a quarter note G5, and a half note A5. The fourth staff (measures 165-166) shows a half note B5, a quarter note C6, and a half note D6. The fifth staff (measures 167-168) contains a half note E6, a quarter note F6, and a half note G6. The sixth staff (measures 169-170) has a half note A6, a quarter note B6, and a half note C7. The seventh staff (measures 171-172) includes a half note D7, a quarter note E7, and a half note F7. The eighth staff (measures 173-174) shows a half note G7, a quarter note A7, and a half note B7. The ninth staff (measures 175-176) features a half note C8, a quarter note D8, and a half note E8. The tenth staff (measures 177-178) has a half note F8, a quarter note G8, and a half note A8. The eleventh staff (measures 179-180) contains a half note B8, a quarter note C9, and a half note D9. The twelfth staff (measures 181-182) shows a half note E9, a quarter note F9, and a half note G9. The thirteenth staff (measures 183-184) includes a half note A9, a quarter note B9, and a half note C10. The fourteenth staff (measures 185-186) has a half note D10, a quarter note E10, and a half note F10. The fifteenth staff (measures 187-188) contains a half note G10, a quarter note A10, and a half note B10. The sixteenth staff (measures 189-190) shows a half note C11, a quarter note D11, and a half note E11. The seventeenth staff (measures 191-192) includes a half note F11, a quarter note G11, and a half note A11. The eighteenth staff (measures 193-194) has a half note B11, a quarter note C12, and a half note D12. The nineteenth staff (measures 195-196) contains a half note E12, a quarter note F12, and a half note G12. The twentieth staff (measures 197-198) shows a half note A12, a quarter note B12, and a half note C13. The twenty-first staff (measures 199-200) includes a half note D13, a quarter note E13, and a half note F13. The twenty-second staff (measures 201-202) has a half note G13, a quarter note A13, and a half note B13. The twenty-third staff (measures 203-204) contains a half note C14, a quarter note D14, and a half note E14. The twenty-fourth staff (measures 205-206) shows a half note F14, a quarter note G14, and a half note A14. The twenty-fifth staff (measures 207-208) includes a half note B14, a quarter note C15, and a half note D15. The twenty-sixth staff (measures 209-210) has a half note E15, a quarter note F15, and a half note G15. The twenty-seventh staff (measures 211-212) contains a half note A15, a quarter note B15, and a half note C16. The twenty-eighth staff (measures 213-214) shows a half note D16, a quarter note E16, and a half note F16. The twenty-ninth staff (measures 215-216) includes a half note G16, a quarter note A16, and a half note B16. The thirtieth staff (measures 217-218) has a half note C17, a quarter note D17, and a half note E17. The thirty-first staff (measures 219-220) contains a half note F17, a quarter note G17, and a half note A17. The thirty-second staff (measures 221-222) shows a half note B17, a quarter note C18, and a half note D18. The thirty-third staff (measures 223-224) includes a half note E18, a quarter note F18, and a half note G18. The thirty-fourth staff (measures 225-226) has a half note A18, a quarter note B18, and a half note C19. The thirty-fifth staff (measures 227-228) contains a half note D19, a quarter note E19, and a half note F19. The thirty-sixth staff (measures 229-230) shows a half note G19, a quarter note A19, and a half note B19. The thirty-seventh staff (measures 231-232) includes a half note C20, a quarter note D20, and a half note E20. The thirty-eighth staff (measures 233-234) has a half note F20, a quarter note G20, and a half note A20. The thirty-ninth staff (measures 235-236) contains a half note B20, a quarter note C21, and a half note D21. The fortieth staff (measures 237-238) shows a half note E21, a quarter note F21, and a half note G21. The forty-first staff (measures 239-240) includes a half note A21, a quarter note B21, and a half note C22. The forty-second staff (measures 241-242) has a half note D22, a quarter note E22, and a half note F22. The forty-third staff (measures 243-244) contains a half note G22, a quarter note A22, and a half note B22. The forty-fourth staff (measures 245-246) shows a half note C23, a quarter note D23, and a half note E23. The forty-fifth staff (measures 247-248) includes a half note F23, a quarter note G23, and a half note A23. The forty-sixth staff (measures 249-250) has a half note B23, a quarter note C24, and a half note D24. The forty-seventh staff (measures 251-252) contains a half note E24, a quarter note F24, and a half note G24. The forty-eighth staff (measures 253-254) shows a half note A24, a quarter note B24, and a half note C25. The forty-ninth staff (measures 255-256) includes a half note D25, a quarter note E25, and a half note F25. The fiftieth staff (measures 257-258) has a half note G25, a quarter note A25, and a half note B25. The fifty-first staff (measures 259-260) contains a half note C26, a quarter note D26, and a half note E26. The fifty-second staff (measures 261-262) shows a half note F26, a quarter note G26, and a half note A26. The fifty-third staff (measures 263-264) includes a half note B26, a quarter note C27, and a half note D27. The fifty-fourth staff (measures 265-266) has a half note E27, a quarter note F27, and a half note G27. The fifty-fifth staff (measures 267-268) contains a half note A27, a quarter note B27, and a half note C28. The fifty-sixth staff (measures 269-270) shows a half note D28, a quarter note E28, and a half note F28. The fifty-seventh staff (measures 271-272) includes a half note G28, a quarter note A28, and a half note B28. The fifty-eighth staff (measures 273-274) has a half note C29, a quarter note D29, and a half note E29. The fifty-ninth staff (measures 275-276) contains a half note F29, a quarter note G29, and a half note A29. The sixtieth staff (measures 277-278) shows a half note B29, a quarter note C30, and a half note D30. The sixty-first staff (measures 279-280) includes a half note E30, a quarter note F30, and a half note G30. The sixty-second staff (measures 281-282) has a half note A30, a quarter note B30, and a half note C31. The sixty-third staff (measures 283-284) contains a half note D31, a quarter note E31, and a half note F31. The sixty-fourth staff (measures 285-286) shows a half note G31, a quarter note A31, and a half note B31. The sixty-fifth staff (measures 287-288) includes a half note C32, a quarter note D32, and a half note E32. The sixty-sixth staff (measures 289-290) has a half note F32, a quarter note G32, and a half note A32. The sixty-seventh staff (measures 291-292) contains a half note B32, a quarter note C33, and a half note D33. The sixty-eighth staff (measures 293-294) shows a half note E33, a quarter note F33, and a half note G33. The sixty-ninth staff (measures 295-296) includes a half note A33, a quarter note B33, and a half note C34. The seventieth staff (measures 297-298) has a half note D34, a quarter note E34, and a half note F34. The seventy-first staff (measures 299-300) contains a half note G34, a quarter note A34, and a half note B34. The seventy-second staff (measures 301-302) shows a half note C35, a quarter note D35, and a half note E35. The seventy-third staff (measures 303-304) includes a half note F35, a quarter note G35, and a half note A35. The seventy-fourth staff (measures 305-306) has a half note B35, a quarter note C36, and a half note D36. The seventy-fifth staff (measures 307-308) contains a half note E36, a quarter note F36, and a half note G36. The seventy-sixth staff (measures 309-310) shows a half note A36, a quarter note B36, and a half note C37. The seventy-seventh staff (measures 311-312) includes a half note D37, a quarter note E37, and a half note F37. The seventy-eighth staff (measures 313-314) has a half note G37, a quarter note A37, and a half note B37. The seventy-ninth staff (measures 315-316) contains a half note C38, a quarter note D38, and a half note E38. The eightieth staff (measures 317-318) shows a half note F38, a quarter note G38, and a half note A38. The eighty-first staff (measures 319-320) includes a half note B38, a quarter note C39, and a half note D39. The eighty-second staff (measures 321-322) has a half note E39, a quarter note F39, and a half note G39. The eighty-third staff (measures 323-324) contains a half note A39, a quarter note B39, and a half note C40. The eighty-fourth staff (measures 325-326) shows a half note D40, a quarter note E40, and a half note F40. The eighty-fifth staff (measures 327-328) includes a half note G40, a quarter note A40, and a half note B40. The eighty-sixth staff (measures 329-330) has a half note C41, a quarter note D41, and a half note E41. The eighty-seventh staff (measures 331-332) contains a half note F41, a quarter note G41, and a half note A41. The eighty-eighth staff (measures 333-334) shows a half note B41, a quarter note C42, and a half note D42. The eighty-ninth staff (measures 335-336) includes a half note E42, a quarter note F42, and a half note G42. The ninetieth staff (measures 337-338) has a half note A42, a quarter note B42, and a half note C43. The hundredth staff (measures 339-340) contains a half note D43, a quarter note E43, and a half note F43. The hundred-first staff (measures 341-342) shows a half note G43, a quarter note A43, and a half note B43. The hundred-second staff (measures 343-344) includes a half note C44, a quarter note D44, and a half note E44. The hundred-third staff (measures 345-346) has a half note F44, a quarter note G44, and a half note A44. The hundred-fourth staff (measures 347-348) contains a half note B44, a quarter note C45, and a half note D45. The hundred-fifth staff (measures 349-350) shows a half note E45, a quarter note F45, and a half note G45. The hundred-sixth staff (measures 351-352) includes a half note A45, a quarter note B45, and a half note C46. The hundred-seventh staff (measures 353-354) has a half note D46, a quarter note E46, and a half note F46. The hundred-eighth staff (measures 355-356) contains a half note G46, a quarter note A46, and a half note B46. The hundred-ninth staff (measures 357-358) shows a half note C47, a quarter note D47, and a half note E47. The hundred-tieth staff (measures 359-360) includes a half note F47, a quarter note G47, and a half note A47. The hundred-first staff (measures 361-362) has a half note B47, a quarter note C48, and a half note D48. The hundred-second staff (measures 363-364) contains a half note E48, a quarter note F48, and a half note G48. The hundred-third staff (measures 365-366) shows a half note A48, a quarter note B48, and a half note C49. The hundred-fourth staff (measures 367-368) includes a half note D49, a quarter note E49, and a half note F49. The hundred-fifth staff (measures 369-370) has a half note G49, a quarter note A49, and a half note B49. The hundred-sixth staff (measures 371-372) contains a half note C50, a quarter note D50, and a half note E50. The hundred-seventh staff (measures 373-374) shows a half note F50, a quarter note G50, and a half note A50. The hundred-eighth staff (measures 375-376) includes a half note B50, a quarter note C51, and a half note D51. The hundred-ninth staff (measures 377-378) has a half note E51, a quarter note F51, and a half note G51. The hundred-tieth staff (measures 379-380) contains a half note A51, a quarter note B51, and a half note C52. The hundred-first staff (measures 381-382) shows a half note D52, a quarter note E52, and a half note F52. The hundred-second staff (measures 383-384) includes a half note G52, a quarter note A52, and a half note B52. The hundred-third staff (measures 385-386) has a half note C53, a quarter note D53, and a half note E53. The hundred-fourth staff (measures 387-388) contains a half note F53, a quarter note G53, and a half note A53. The hundred-fifth staff (measures 389-390) shows a half note B53, a quarter note C54, and a half note D54. The hundred-sixth staff (measures 391-392) includes a half note E54, a quarter note F54, and a half note G54. The hundred-seventh staff (measures 393-394) has a half note A54, a quarter note B54, and a half note C55. The hundred-eighth staff (measures 395-396) contains a half note D55, a quarter note E55, and a half note F55. The hundred-ninth staff (measures 397-398) shows a half note G55, a quarter note A55, and a half note B55. The hundred-tieth staff (measures 399-400) includes a half note C56, a quarter note D56, and a half note E56. The hundred-first staff (measures 401-402) has a half note F56, a quarter note G56, and a half note A56. The hundred-second staff (measures 403-404) contains a half note B56, a quarter note C57, and a half note D57. The hundred-third staff (measures 405-406) shows a half note E57, a quarter note F57, and a half note G57. The hundred-fourth staff (measures 407-408) includes a half note A57, a quarter note B57, and a half note C58. The hundred-fifth staff (measures 409-410) has a half note D58, a quarter note E58, and a half note F58. The hundred-sixth staff (measures 411-412) contains a half note G58, a quarter note A58, and a half note B58. The hundred-seventh staff (measures 413-414) shows a half note C59, a quarter note D59, and a half note E59. The hundred-eighth staff (measures 415-416) includes a half note F59, a quarter note G59, and a half note A59. The hundred-ninth staff (measures 417-418) has a half note B59, a quarter note C60, and a half note D60. The hundred-tieth staff (measures 419-420) contains a half note E60, a quarter note F60, and a half note G60. The hundred-first staff (measures 421-422) shows a half note A60, a quarter note B60, and a half note C61. The hundred-second staff (measures 423-424) includes a half note D61, a quarter note E61, and a half note F61. The hundred-third staff (measures 425-426) has a half note G61, a quarter note A61, and a half note B61. The hundred-fourth staff (measures 427-428) contains a half note C62, a quarter note D62, and a half note E62. The hundred-fifth staff (measures 429-430) shows a half note F62, a quarter note G62, and a half note A62. The hundred-sixth staff (measures 431-432) includes a half note B62, a quarter note C63, and a half note D63. The hundred-seventh staff (measures 433-434) has a half note E63, a quarter note F63, and a half note G63. The hundred-eighth staff (measures 435-436) contains a half note A63, a quarter note B63, and a half note C64. The hundred-ninth staff (measures 437-438) shows a half note D64, a quarter note E64, and a half note F64. The hundred-tieth staff (measures 439-440) includes a half note G64, a quarter note A64, and a half note B64. The hundred-first staff (measures 441-442) has a half note C65, a quarter note D65, and a half note E65. The hundred-second staff (measures 443-444) contains a half note F65, a quarter note G65, and a half note A65. The hundred-third staff (measures 445-446) shows a half note B65, a quarter note C66, and a half note D66. The hundred-fourth staff (measures 447-448) includes a half note E66, a quarter note F66, and a half note G66. The hundred-fifth staff (measures 449-450) has a half note A66, a quarter note B66, and a half note C67. The hundred-sixth staff (measures 451-452) contains a half note D67, a quarter note E67, and a half note F67. The hundred-seventh staff (measures 453-454) shows a half note G67, a quarter note A67, and a half note B67. The hundred-eighth staff (measures 455-456) includes a half note C68, a quarter note D68, and a half note E68. The hundred-ninth staff (measures 457-458) has a half note F68, a quarter note G68, and a half note A68. The hundred-tieth staff (measures 459-460) contains a half note B68, a quarter note C69, and a half note D69. The hundred-first staff (measures 461-462) shows a half note E69, a quarter note F69, and a half note G69. The hundred-second staff (measures 463-464) includes a half note A69, a quarter note B69, and a half note C70. The hundred-third staff (measures 465-466) has a half note D70, a quarter note E70, and a half note F70. The hundred-fourth staff (measures 467-468) contains a half note G70, a quarter note A70, and a half note B70. The hundred-fifth staff (measures 469-470) shows a half note C71, a quarter note D71, and a half note E71. The hundred-sixth staff (measures 471-472) includes a half note F71, a quarter note G71, and a half note A71. The hundred-seventh staff (measures 473-474) has a half note B71, a quarter note C72, and a half note D72. The hundred-eighth staff (measures 475-476) contains a half note E72, a quarter note F72, and a half note G72. The hundred-ninth staff (measures 477-478) shows a half note A72, a quarter note B72, and a half note C73. The hundred-tieth staff (measures 479-480) includes a half note D73, a quarter note E73, and a half note F73. The hundred-first staff (measures 481-482) has a half note G73, a quarter note A73, and a half note B73. The hundred-second staff (measures 483-484) contains a half note C74, a quarter note D74, and a half note E74. The hundred-third staff (measures 485-486) shows a half note F74, a quarter note G74, and a half note A74. The hundred-fourth staff (measures 487-488) includes a half note B74, a quarter note C75, and a half note D75. The hundred-fifth staff (measures 489-490) has a half note E75, a quarter note F75, and a half note G75. The hundred-sixth staff (measures 491-492) contains a half note A75, a quarter note B75, and a half note C76. The hundred-seventh staff (measures 493-494) shows a half note D76, a quarter note E76, and a half note F76. The hundred-eighth staff (measures 495-496) includes a half note G76, a quarter note A76, and a half note B76. The hundred-ninth staff (measures 497-498) has a half note C77, a quarter note D77, and a half note E77. The hundred-tieth staff (measures 499-500) contains a half note F77, a quarter note G77, and a half note A77. The hundred-first staff (measures 501-502) shows a half note B77, a quarter note C78, and a half note D78. The hundred-second staff (measures 503-504) includes a half note E78, a quarter note F78, and a half note G78. The hundred-third staff (measures 505-506) has a half note A78, a quarter note B78, and a half note C79. The hundred-fourth staff (measures 507-508) contains a half note D79, a quarter note E79, and a half note F79. The hundred-fifth staff (measures 509-510) shows a half note G79, a quarter note A79, and a half note B79. The hundred-sixth staff (measures 511-512) includes a half note C80, a quarter note D80, and a half note E80. The hundred-seventh staff (measures 513-514) has a half note F80, a quarter note G80, and a half note A80. The hundred-eighth staff (measures 515-516) contains a half note B80, a quarter note C81, and a half note D81. The hundred-ninth staff (measures 517-518) shows a half note E81, a quarter note F81, and a half note G81. The hundred-tieth staff (measures 519-520) includes a half note A81, a quarter note B81, and a half note C82. The hundred-first staff (measures 521-522) has a half note D82, a quarter note E82, and a half note F82. The hundred-second staff (measures 523-524) contains a half note G82, a quarter note A82, and a half note B82. The hundred-third staff (measures 525-526) shows a half note C83, a quarter note D83, and a half note E83. The hundred-fourth staff (measures 527-528) includes a half note F83, a quarter note G83, and a half note A83. The hundred-fifth staff (measures 529-530) has a half note B83, a quarter note C84, and a half note D84. The hundred-sixth staff (measures 531-532) contains a half note E84, a quarter note F84, and a half note G84. The hundred-seventh staff (measures 533-534) shows a half note A84, a quarter note B84, and a half note C85. The hundred-eighth staff (measures 535-536) includes a half note D85, a quarter note E85, and a half note F85. The hundred-ninth staff (measures 537-538) has a half note G85, a quarter note A85, and a half note B85. The hundred-tieth staff (measures 539-540) contains a half note C86, a quarter note D86, and a half note E86. The hundred-first staff (measures 541-542) shows a half note F86, a quarter note G86, and a half note A86. The hundred-second staff (measures 543-544) includes a half note B86, a quarter note C87, and a half note D87. The hundred-third staff (measures 545-546) has a half note E87, a quarter note F87, and a half note G87. The hundred-fourth staff (measures 547-548) contains a half note A87, a quarter note B87, and a half note C88. The hundred-fifth staff (measures 549-550) shows a half note D88, a quarter note E88, and a half note F88. The hundred-sixth staff (measures 551-552) includes a half note G88, a quarter note A88, and a half note B88. The hundred-seventh staff (measures 553-554) has a half note C89, a quarter note D89, and a half note E89. The hundred-eighth staff (measures 555-556) contains a half note F89, a quarter note G89, and a half note A89. The hundred-ninth staff (measures 557-558) shows a half note B89, a quarter note C90, and a half note D90. The hundred-tieth staff (measures 559-560) includes a half note E90, a quarter note F90, and a half note G90. The hundred-first staff (measures 561-562) has a half note A90, a quarter note B90, and a half note C91. The hundred-second staff (measures 563-564) contains a half note D91, a quarter note E91, and a half note F91. The hundred-third staff (measures 565-566) shows a half note G91, a quarter note A91, and a half note B91. The hundred-fourth staff (measures 567-568) includes a half note C92, a quarter note D92, and a half note E92. The hundred-fifth staff (measures 569-570) has a half note F92, a quarter note G92, and a half note A92. The hundred-sixth staff (measures 571-572) contains a half note B92, a quarter note C93, and a half note D93. The hundred-seventh staff (measures 573-574) shows a half note E93, a quarter note F93, and a half note G93. The hundred-eighth staff (measures 575-576) includes a half note A93, a quarter note B93, and a half note C94. The hundred-ninth staff (measures 577-578) has a half note D94, a quarter note E94, and a half note F94. The hundred-tieth staff (measures 579-580) contains a half note G94, a quarter note A94, and a half note B94. The hundred-first staff (measures 581-582) shows a half note C95, a quarter note D95, and a half note E95. The hundred-second staff (measures 583-584) includes a half note F95, a quarter note G95, and a half note A95. The hundred-third staff (measures 585-586) has a half note B95, a quarter note C96, and a half note D96. The hundred-fourth staff (measures 587-588) contains a half note E96, a quarter note F96, and a half note G96. The hundred-fifth staff (measures 589-590) shows a half note A96, a quarter note B96, and a half note C97. The hundred-sixth staff (measures 591-592) includes a half note D97, a quarter note E97, and a half note F97. The hundred-seventh staff (measures 593-594) has a half note G97, a quarter note A97, and a half note B97. The hundred-eighth staff (measures 595-596) contains a half note C98, a quarter note D98, and a half note E98. The hundred-ninth staff (measures 597-598) shows a half note F98, a quarter note G98, and a half note A98. The hundred-tieth staff (measures 599-600) includes a half note B98, a quarter note C99, and a half note D99. The hundred-first staff (measures 601-602) has a half note E99, a quarter note F99, and a half note G99. The hundred-second staff (measures 603-604) contains a half note A99, a quarter note B99, and a half note C100. The hundred-third staff (measures 605-606) shows a half note D100, a quarter note E100, and a half note F100. The hundred-fourth staff (measures 607-608) includes a half note G100, a quarter note A100, and a half note B100. The hundred-fifth staff (measures 609-610) has a half note C101, a quarter note D101, and a half note E101. The hundred-sixth staff (measures 611-612) contains a half note F101, a quarter note G101, and a half note A101. The hundred-seventh staff (measures 613-614) shows a half note B101, a quarter note C102, and a half note D102. The hundred-eighth staff (measures 615-616) includes a half note E102, a quarter note F102, and a half note G102. The hundred-ninth staff (measures 617-618) has a half note A102, a quarter note B102, and a half note C103. The hundred-tieth staff (measures 619-620) contains a half note D103, a quarter note E103, and a half note F103. The hundred-first staff (measures 621-622) shows a half note G103, a quarter note A103, and a half note B103. The hundred-second staff (measures 623-624) includes a half note C104, a quarter note D104, and a half note E104. The hundred-third staff (measures 625-626) has a half note F104, a quarter note G104, and a half note A104. The hundred-fourth staff (measures 627-628) contains a half note B104, a quarter note C105, and a half note D105. The hundred-fifth staff (measures 629-630) shows a half note E105, a quarter note F105, and a half note G105. The hundred-sixth staff (measures 631-632) includes a half note A105, a quarter note B105, and a half note C106. The hundred-seventh staff (measures 633-634) has a half note D106, a quarter note E106, and a half note F106. The hundred-eighth staff (measures 635-636) contains a half note G106, a quarter note A106, and a half note B106. The hundred-ninth staff (measures 637-638) shows a half note C107, a quarter note D107, and a half note E107. The hundred-tieth staff (measures 639-640) includes a half note F107, a quarter note G107, and a half note A107. The hundred-first staff (measures 641-642) has a half note B107, a quarter note C108, and a half note D108. The hundred-second staff (measures 643-644) contains a half note E108, a quarter note F108, and a half note G108. The hundred-third staff (measures 645-646) shows a half note A108, a quarter note B108, and a half note C109. The hundred-fourth staff (measures 647-648) includes a half note D109, a quarter note E109, and a half note F109. The hundred-fifth staff (measures 649-650) has a half note G109, a quarter note A109, and a half note B109. The hundred-sixth staff (measures 651-652) contains a half note C110, a quarter note D110, and a half note E110. The hundred-seventh staff (measures 653-654) shows a half note F110, a quarter note G110, and a half note A110. The hundred-eighth staff (measures 655-656) includes a half note B110, a quarter note C111, and a half note D111. The hundred-ninth staff (measures 657-658) has a half note E111, a quarter note F111, and a half note G111. The hundred-tieth staff (measures 659-660) contains a half note A111, a quarter note B111, and a half note C112. The hundred-first staff (measures 661-662) shows a half note D112, a quarter note E112, and a half note F112. The hundred-second staff (measures 663-664) includes a half note G112, a quarter note A112, and a half note B112. The hundred-third staff (measures 665-666) has a half note C113, a quarter note D113, and a half note E113. The hundred-fourth staff (measures 667-668) contains a half note F113, a quarter note G113, and a half note A113. The hundred-fifth staff (measures 669-670) shows a half note B113, a quarter note C114, and a half note D114. The hundred-sixth staff (measures 671-672) includes a half note E114, a quarter note F114, and a half note G114. The hundred-seventh staff (measures 673-674) has a half note A114, a quarter note B114, and a half note C115. The hundred-eighth staff (measures 675-676) contains a half note D115, a quarter note E115, and a half note F115. The hundred-ninth staff (measures 677-678) shows a half note G115, a quarter note A115, and a half note B115. The hundred-tieth staff (measures 679-680) includes a half note C116, a quarter note D116, and a half note E116. The hundred-first staff (measures 681-682) has a half note F116, a quarter note G116, and a half note A116. The hundred-second staff (measures 683-684) contains a half note B116, a quarter note C117, and a half note D117. The hundred-third staff (measures 685-686) shows a half note E117, a quarter note F117, and a half note G117. The hundred-fourth staff (measures 687-688) includes a half note A117, a quarter note B117, and a half note C118. The hundred-fifth staff (measures 689-690) has a half note D118, a quarter note E118, and a half note F118. The hundred-sixth staff (measures 691-692) contains a half note G118, a quarter note A118, and a half note B118. The hundred-seventh staff (measures 693-694) shows a half note C119, a quarter note D119, and a half note E119. The hundred-eighth staff (measures 695-696) includes a half note F119, a quarter note G119, and a half note A119. The hundred-ninth staff (measures 697-698) has a half note B119, a quarter note C120, and a half note D120. The hundred-tieth staff (measures 699-700) contains a half note E120, a quarter note F120, and a half note G120. The hundred-first staff (measures 701-702) shows a half note A120, a quarter note B120, and a half note C121. The hundred-second staff (measures 703-704) includes a half note D121, a quarter note E121, and a half note F121. The hundred-third staff (measures 705-706) has a half note G121, a quarter note A121, and a half note B121. The hundred-fourth staff (measures 707-708) contains a half note C122, a quarter note D122, and a half note E122. The hundred-fifth staff (measures 709-710) shows a half note F122, a quarter note G122, and a half note A122. The hundred-sixth staff (measures 711-712) includes a half note B122, a quarter note C123, and a half note D123. The hundred-seventh staff (measures 713-714) has a half note E123, a quarter note F123, and a half note G123. The hundred-eighth staff (measures 715-716) contains a half note A123, a quarter note B123, and a half note C124. The hundred-ninth staff (measures 717-718) shows a half note D124, a quarter note E124, and a half note F124. The hundred-tieth staff (measures 719-720) includes a half note G124, a quarter note A124, and a half note B124. The hundred-first staff (measures 721-722) has a half note C125, a quarter note D125, and a half note E125. The hundred-second staff (measures 723-724) contains a half note F125, a quarter note G125, and a half note A125. The hundred-third staff (measures 725-726) shows a half note B125, a quarter note C126, and a half note D126. The hundred-fourth staff (measures 727-728) includes a half note E126, a quarter note F126, and a half note G126. The hundred-fifth staff (measures 729-730) has a half note A126, a quarter note B126, and a half note C127. The hundred-sixth staff (measures 731-732) contains a half note D127, a quarter note E127, and a half note F127. The hundred-seventh staff (measures 733-734) shows a half note G127, a quarter note A127, and a half note B127. The hundred-eighth staff (measures 735-736) includes a half note C128, a quarter note D128, and a half note E128. The hundred-ninth staff (measures 737-738) has a half note F128, a quarter note G128, and a half note A128. The hundred-tieth staff (measures 739-740) contains a half note B128, a quarter note C129, and a half note D129. The hundred-first staff (measures 741-742) shows a half note E129, a quarter note F129, and a half note G129. The hundred-second staff (measures 743-744) includes a half note A129, a quarter note B129, and a half note C130. The hundred-third staff (measures 745-746) has a half note D130, a quarter note E130, and a half note F130. The hundred-fourth staff (measures 747-748) contains a half note G130, a quarter note A130, and a half note B130. The hundred-fifth staff (measures 749-750) shows a half note C131, a quarter note D131, and a half note E131. The hundred-sixth staff (measures 751-752) includes a half note F131, a quarter note G131, and a half note A131. The hundred-seventh staff (measures 753-754) has a half note B131, a quarter note C132, and a half note D132. The hundred-eighth staff (measures 755-756) contains a half note E132, a quarter note F132, and a half note G132. The hundred-ninth staff (measures 757-758) shows a half note A132, a quarter note B132, and a half note C133. The hundred-tieth staff (measures 759-760) includes a half note D133, a quarter note E133, and a half note F133. The hundred-first staff (

## Var. VIII.

*f* (No slurs present.)

211  
*p*

222

*fp*

*attacca subito la Coda*

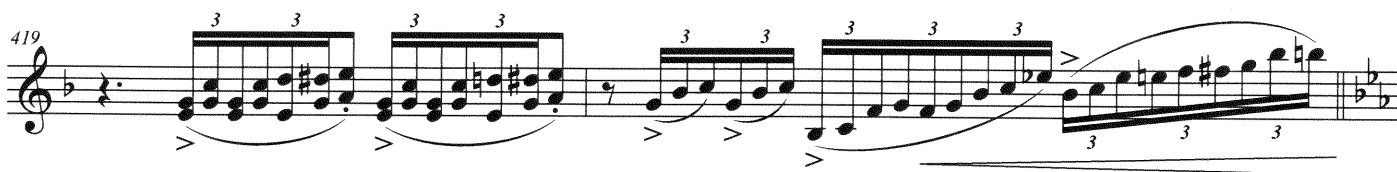
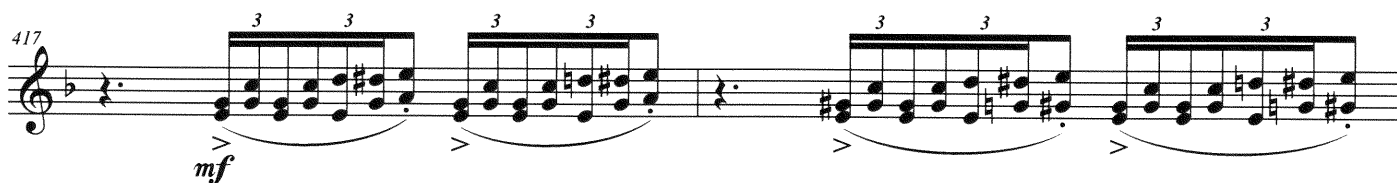
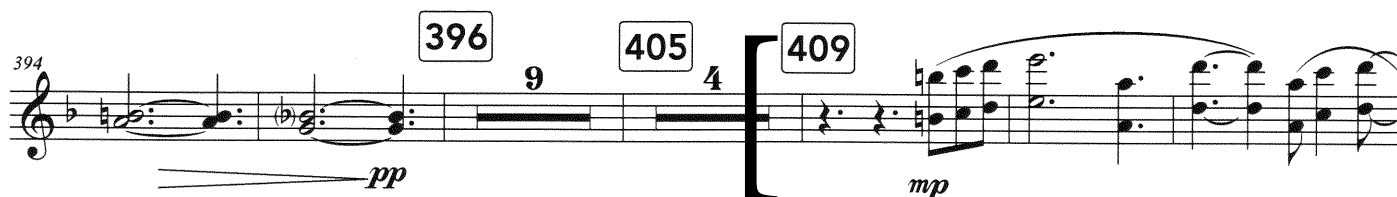
## Coda.

Musical score for Oboe II, Coda section. The score is written in 6/8 time and consists of eight staves. The first staff begins with a treble clef, a key signature of one sharp (F#), and a 6/8 time signature. It features a triplet of eighth notes (G4, A4, B4) followed by a series of eighth and sixteenth notes. A dynamic marking of *sf* (sforzando) appears below the staff. The second staff continues the melodic line with eighth and sixteenth notes. The third staff features a series of eighth notes and a half note. The fourth staff, marked with the measure number 254, continues the eighth-note pattern. The fifth staff, marked with the measure number 261, begins with a half note and is marked with a dynamic of *(f)*. The sixth staff continues the eighth-note pattern. The seventh staff begins with a half note and is marked with dynamics *(f)* and *(p)*. The eighth staff concludes the section with a large closing bracket and a final half note. The score ends with a double bar line and a key signature change to two sharps (F# and C#).

# IV. Soul

(for Mom)

$\text{♩} = 46$



Mozart

**Menuetto.**

In Canone.

In Canonform.

**Oboe 1**

*f*

*p* *sfp* *sfp* *f*

4 → 5

**Trio.**

In Canone al rovescio.

Canon in der Umkehrung.

Ob. II.

*mezza voce*

1 2

2

**Menuetto da capo.**

Mozart

**Menuetto.**

Oboe 2

In Canone.

In Canonform.

*f*

*p*

*sfp*

*sfp*

*f*

*tr.*

*tr.*

*tr.*

**Trio.**

In Canone al rovescio.

Canon in der Umkehrung.

*mezza voce*

Menuetto da capo.